



# Linking Structure and Function

## Use of PDB data as baseline for in-solution characterization

 Emil G.P. Stender<sup>1</sup>, Henrik Jensen<sup>1</sup>
<sup>1</sup>Fida Biosystems, Copenhagen (Søborg), Denmark, [www.fidabio.com](http://www.fidabio.com), e-mail: [egps@fidabio.com](mailto:egps@fidabio.com)

### INTRODUCTION

We present the Fidabio PDB (Protein Data Bank) Correlator which predicts the hydrodynamic radius ( $R_h$ ) of proteins based on X-ray, Cryo-EM structural data or AI-generated structures like AlphaFold. The comparison of the  $R_h$  predictions with in-solution  $R_h$  measurements offers structural and functional information about the protein of interest.

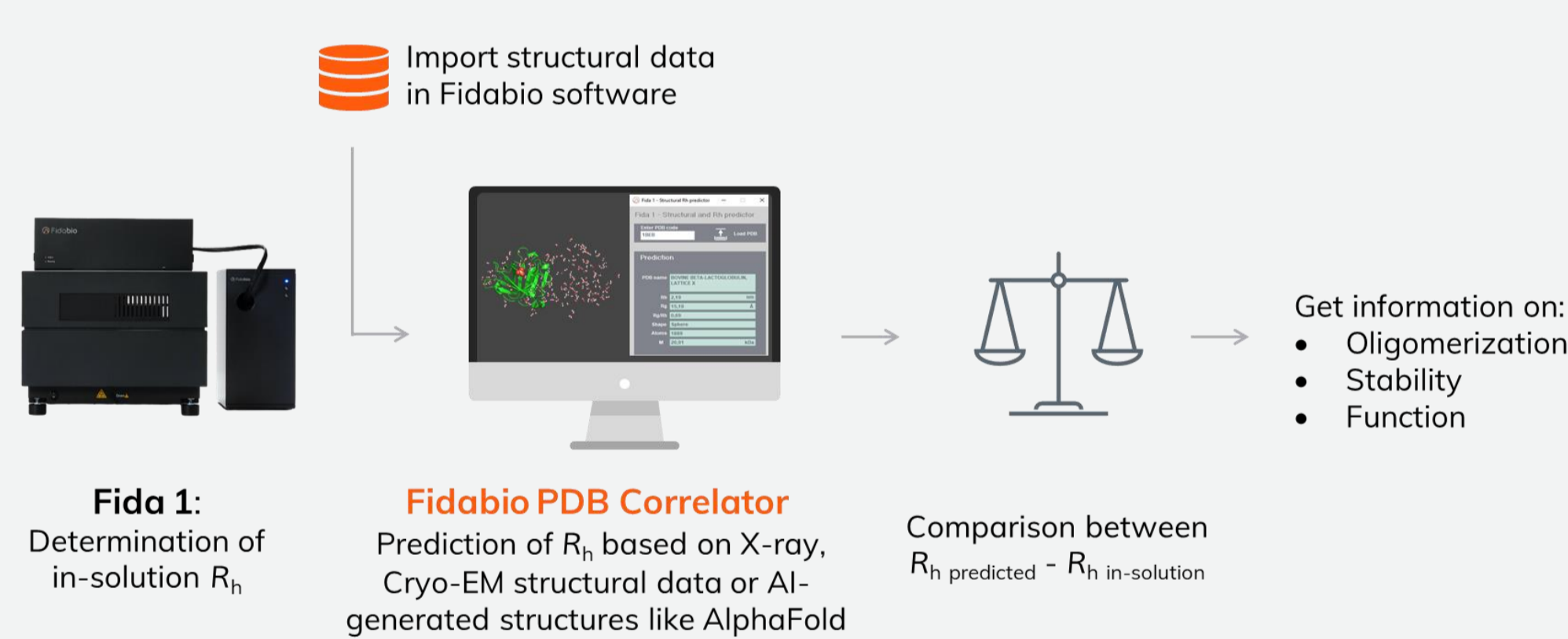
In the present work, we use the Fidabio PDB Correlator to predict the in-solution  $R_h$  of bovine  $\beta$ -lactoglobulin, human serum albumin, bovine serum albumin and chicken lysozyme. Subsequently, using Fida 1 equipped with a UV fluorescence detector, the  $R_h$  of label-free proteins are experimentally measured in-solution and compared with the predicted  $R_h$ .

### METHOD

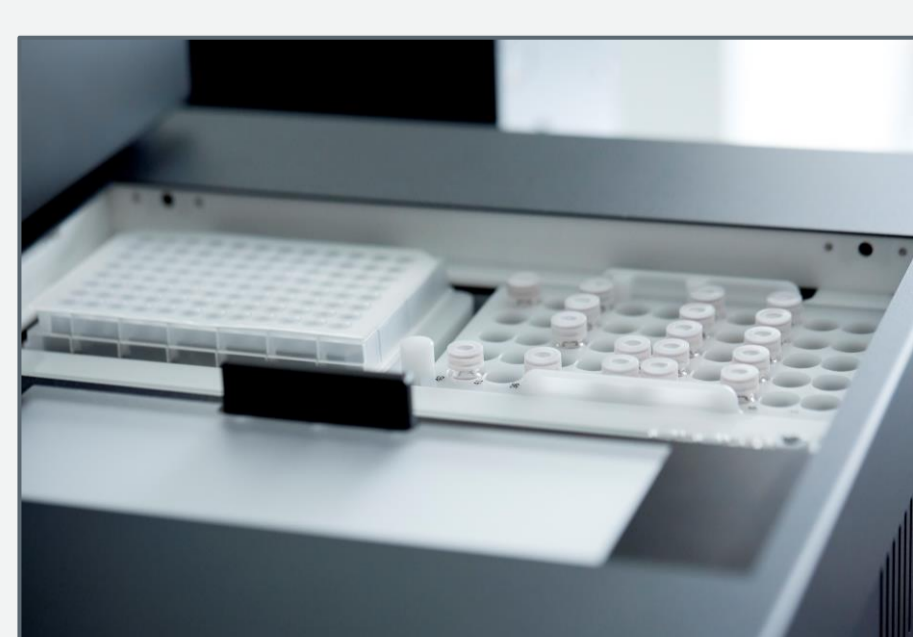
For in-solution determination of  $R_h$ , we used the Fida 1 instrument employing 280 nm LED fluorescence detection. In this Fida 1 assay, the Bovine  $\beta$ -lactoglobulin (BLG), Human Serum Albumin (HSA), Bovine Serum Albumin (BSA) and Chicken lysozyme (LYZ) serve as (intrinsically) fluorescent “indicators”. The buffer serves as the “analyte”.

For predicting the  $R_h$  based on PDB structural data, we used the Fidabio PDB Correlator, integrated in the Fidabio software. Crystal structures were acquired from the Protein Data Bank (<https://www.rcsb.org/>).

#### FIDABIO PDB CORRELATOR

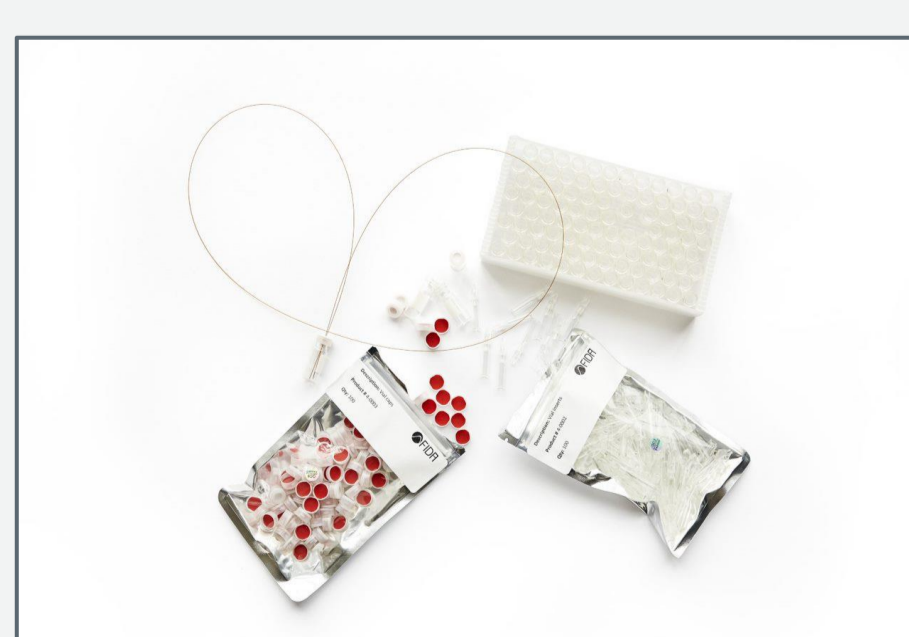


#### Fida 1



Autosampler:

- 2x96 well plates
- 2x50 vials



Consumables:

- Vials and/or
- 96 well plates
- HS-capillary

### RESULTS

Using the Fidabio PDB Correlator, the PDB data are loaded into the Fidabio software which subsequently gives the predicted  $R_h$  and mass.

Protein	PDB Code	Predicted $R_h$ (nm)	Apparent $R_h$ (nm)	Predicted Mw (kDa)	Theoretical Mw (kDa)
LYZ	1IEE	1.97	1.91 ± 0.01	14.51	14.31
BLG	1BEB	2.85	2.77 ± 0.06	36.21	36.58
HSA	1A06	3.5	3.81 ± 0.04	65.76	66.47
BSA	4F5S	3.52	3.53 ± 0.04	66.77	66.43

#### INSIGHTS IN BLG STRUCTURE USING THE FIDABIO PDB CORRELATOR

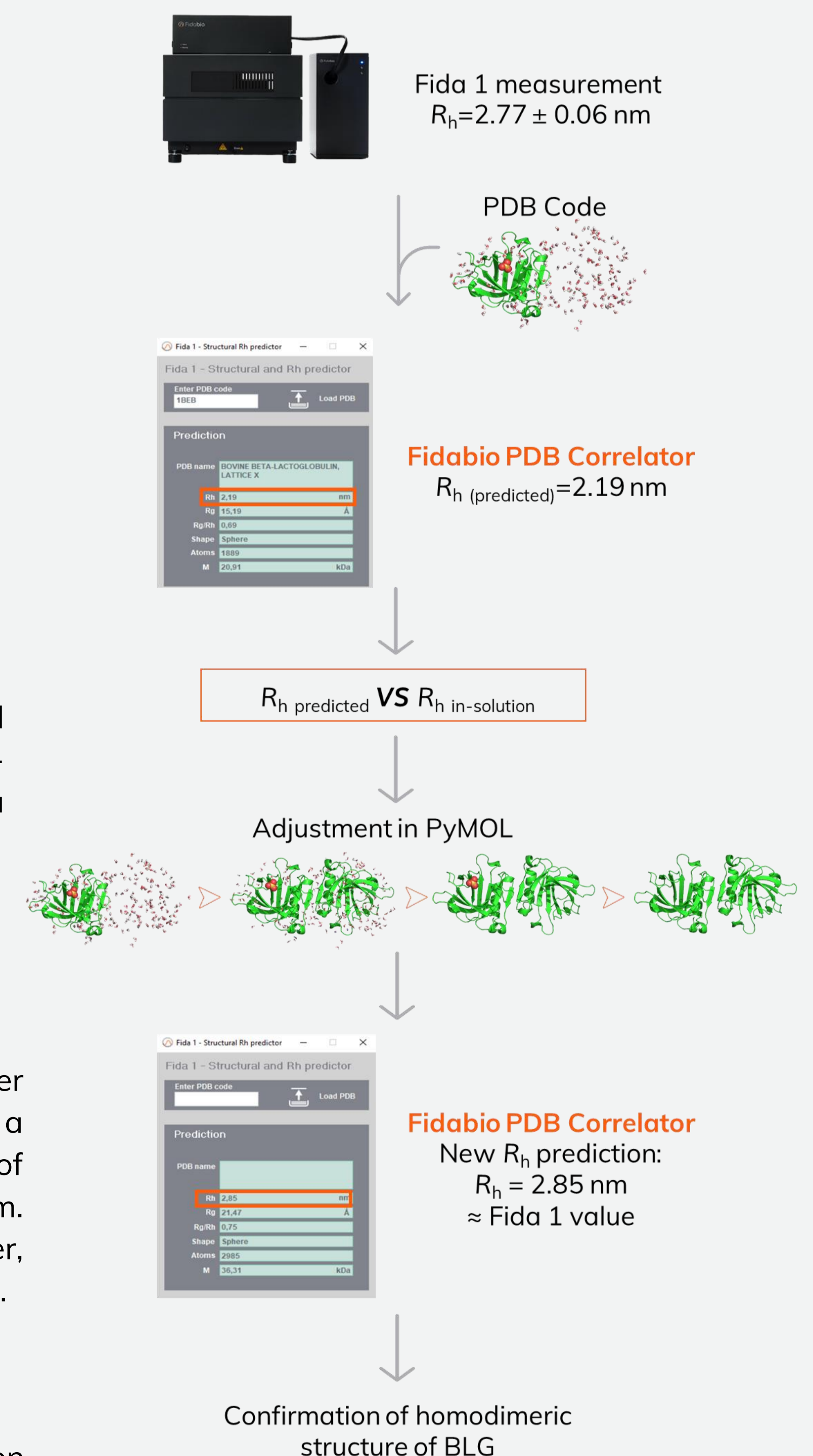
Fida 1 is used for in-solution determination of BLG  $R_h$  which is measured to be 2.77 ± 0.06 nm.

The PDB code of BLG (1BEB) is loaded into the Fidabio PDB Correlator which predicts the  $R_h$  based on the imported structural data. The predicted  $R_h$  is 2.19 nm.

The discrepancy between predicted  $R_h$  and experiment  $R_h$  values indicates that the in-solution BLG structure might not be a monomer.

Cleaning up the file and using a homodimer structure, the Fidabio PDB Correlator gives a new  $R_h$  of 2.85 nm, which is within 2.8% of the experimental value of 2.77 ± 0.06 nm. This indicates that BLG is a homodimer, which is in agreement with the literature [1].

More data are presented in the Application Note which can be accessed scanning the QR code at the upper left-hand corner.



### CONCLUSIONS

In the present work, we show how the Fidabio PDB Correlator provides an accurate correlation (<9% error) between a protein's size in-solution (hydrodynamic radius) and structure. Structural data can be supplied both by experimentally solved and AI-generated structures. The correlation can generate information on the in-solution state of the protein of interest, like oligomerization and integrity, as well as insights on functionality.